



University of
CUMBRIA

NAVIGATING THE LIBRARY

LANCASTER CAMPUS



Where to ask
questions.



Where to go to complete
online classes or meetings.



Where to go to
complete group work.

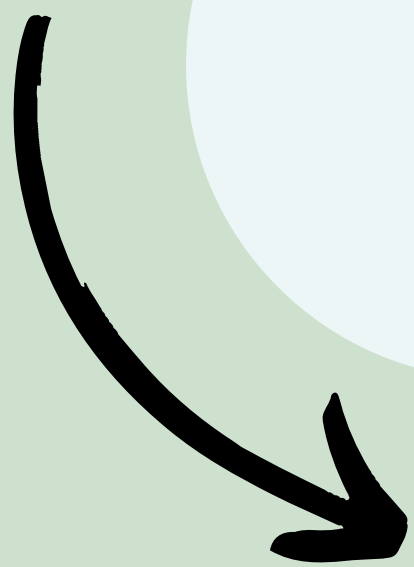


How to access any
help you need.



How to find all the
resources you may
need.

This is the main entrance to the library at Lancaster campus.



If you walk past the main entrance you will notice the accessible entrance. This is the only entrance that can be accessed outside of staffed hours (keycard access only).



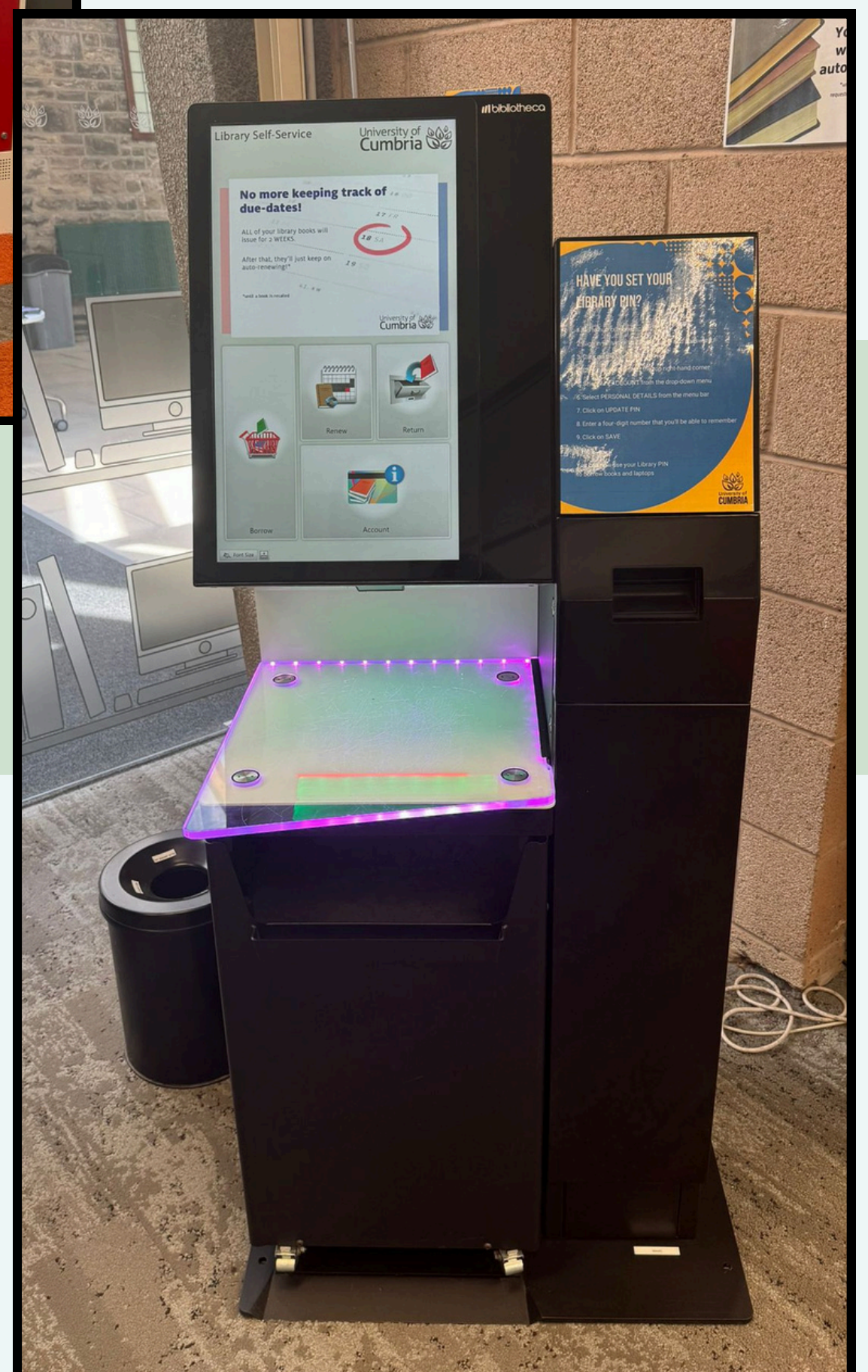
This is what you will see
once you enter the
building.



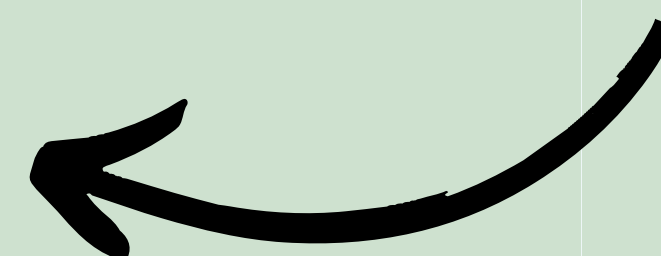
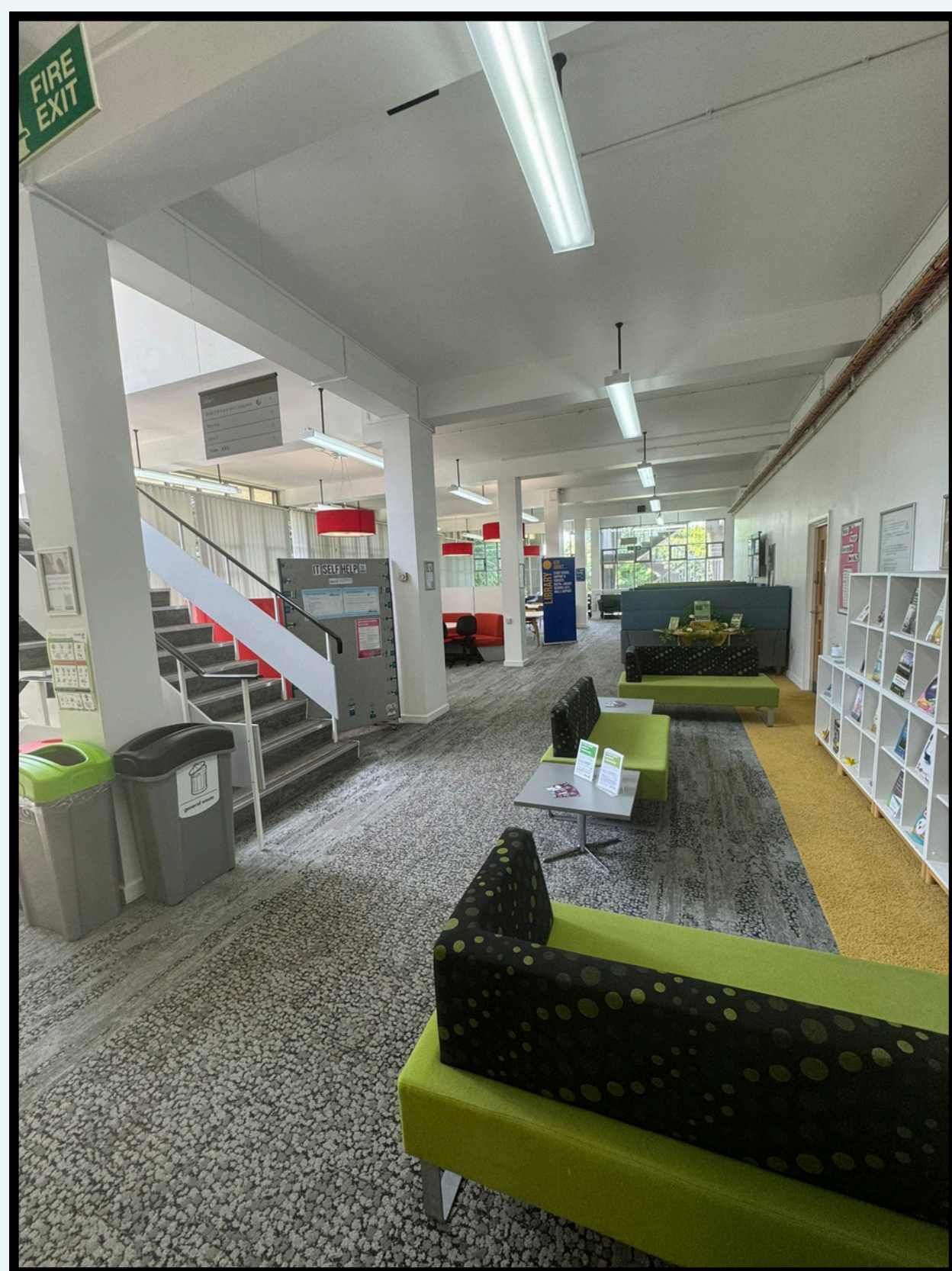
Turn left and you will see the STEP desk - there will be staff here Monday - Friday 9am - 5pm to answer your questions.



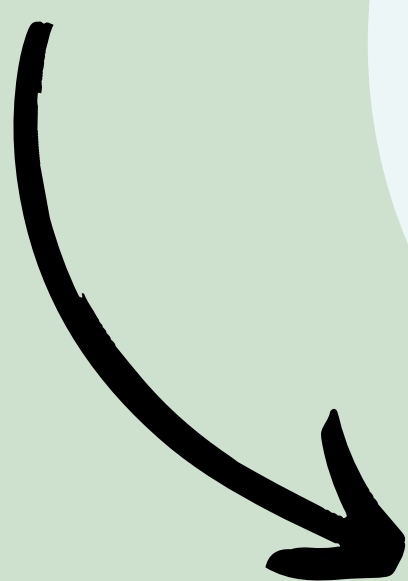
Near the step desk are the self-issue laptops and the kiosk where you can borrow and return books.



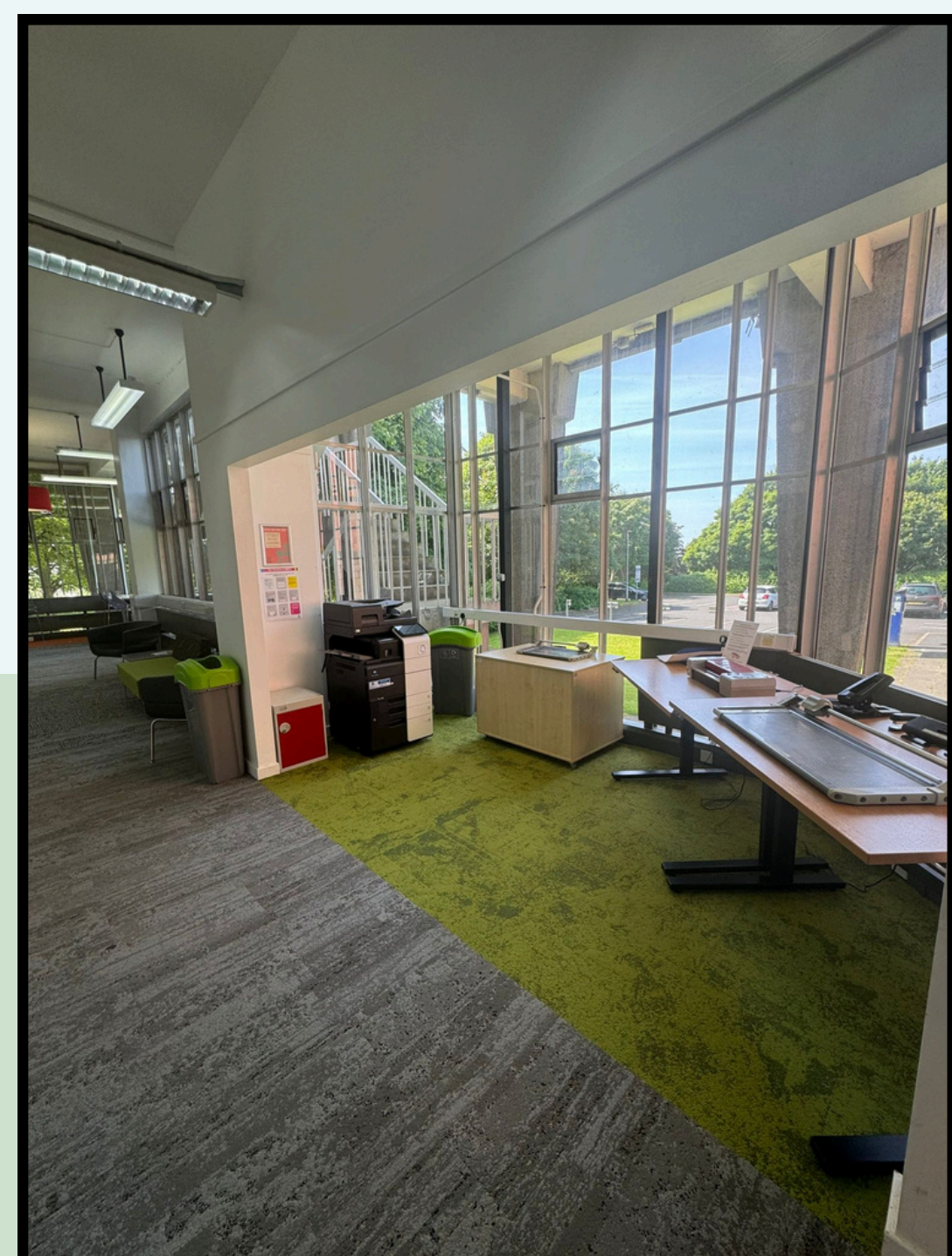
Across from the STEP desk is the reservation collection zone. You can collect books you have requested and then take them to the kiosk to issue them to your library account.



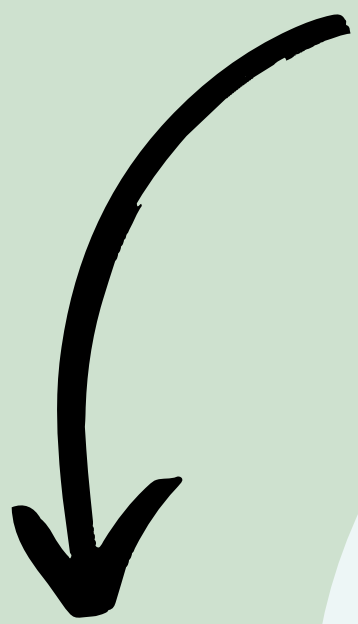
If you walk past the STEP desk you will see **Zone 1** of the library - this is the social zone.



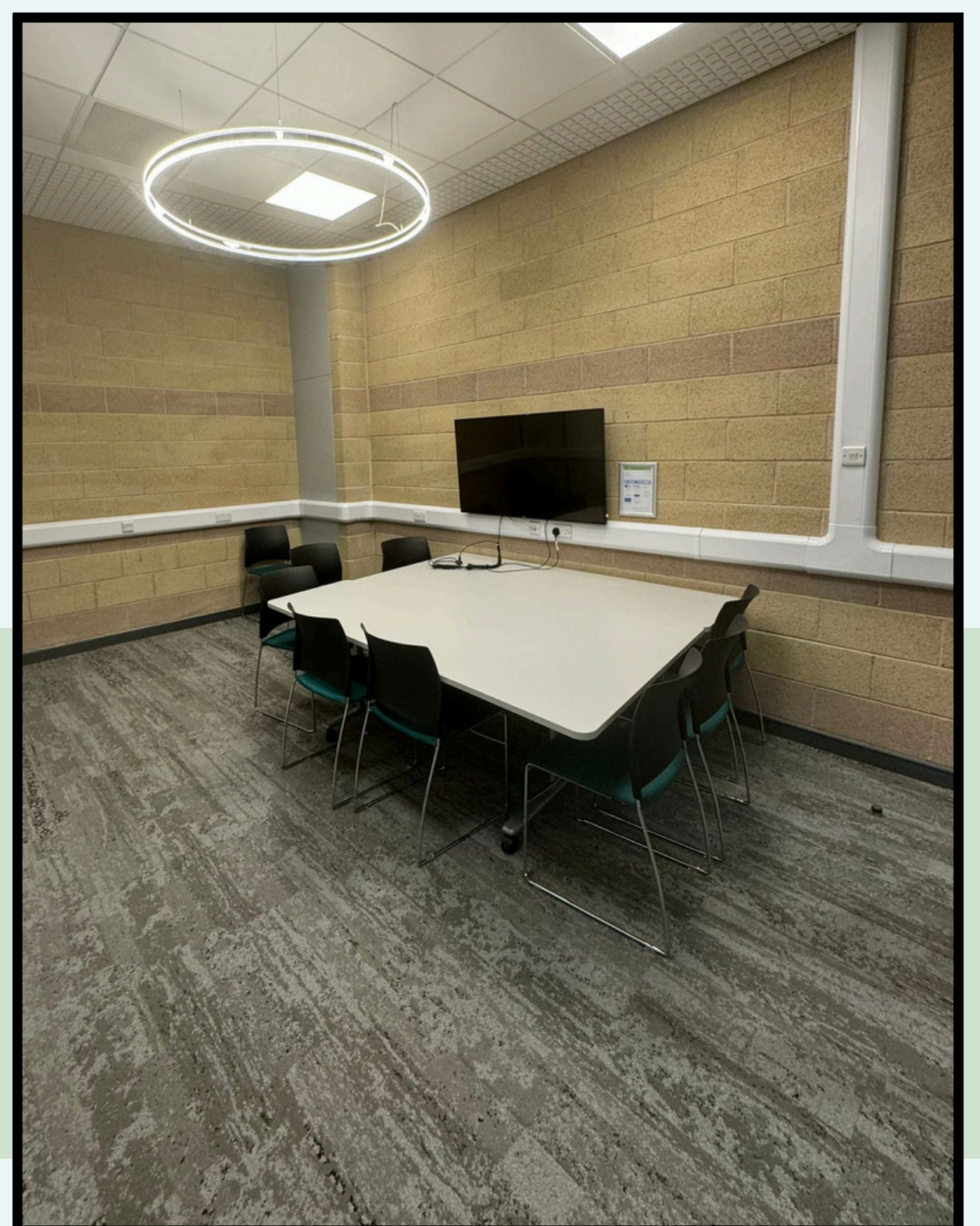
At the back of zone 1 there is a printer/copier/scanner, a guillotine and a laminator. Please ask staff if you need help with any of these.



Follow the corridor to the right of the printer/copier/scanner and go through to **Zone 2** - a social zone perfect for group study.

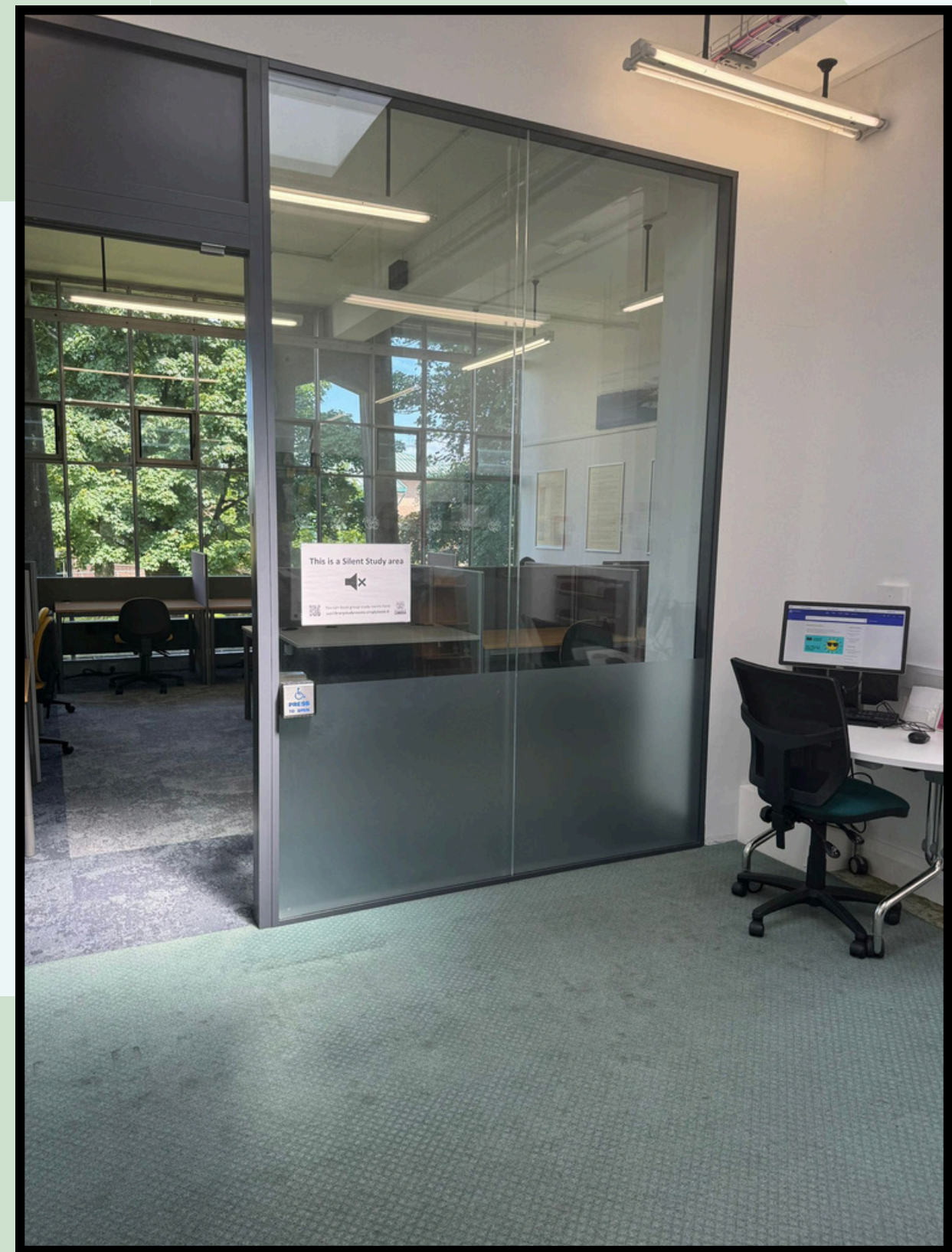


At the back of zone 2 there are study rooms, ideal for preparing and practising group presentations. These can be booked online.



When you go upstairs you will enter **Zone 3**, the quiet zone.

Straight ahead is the silent study room.

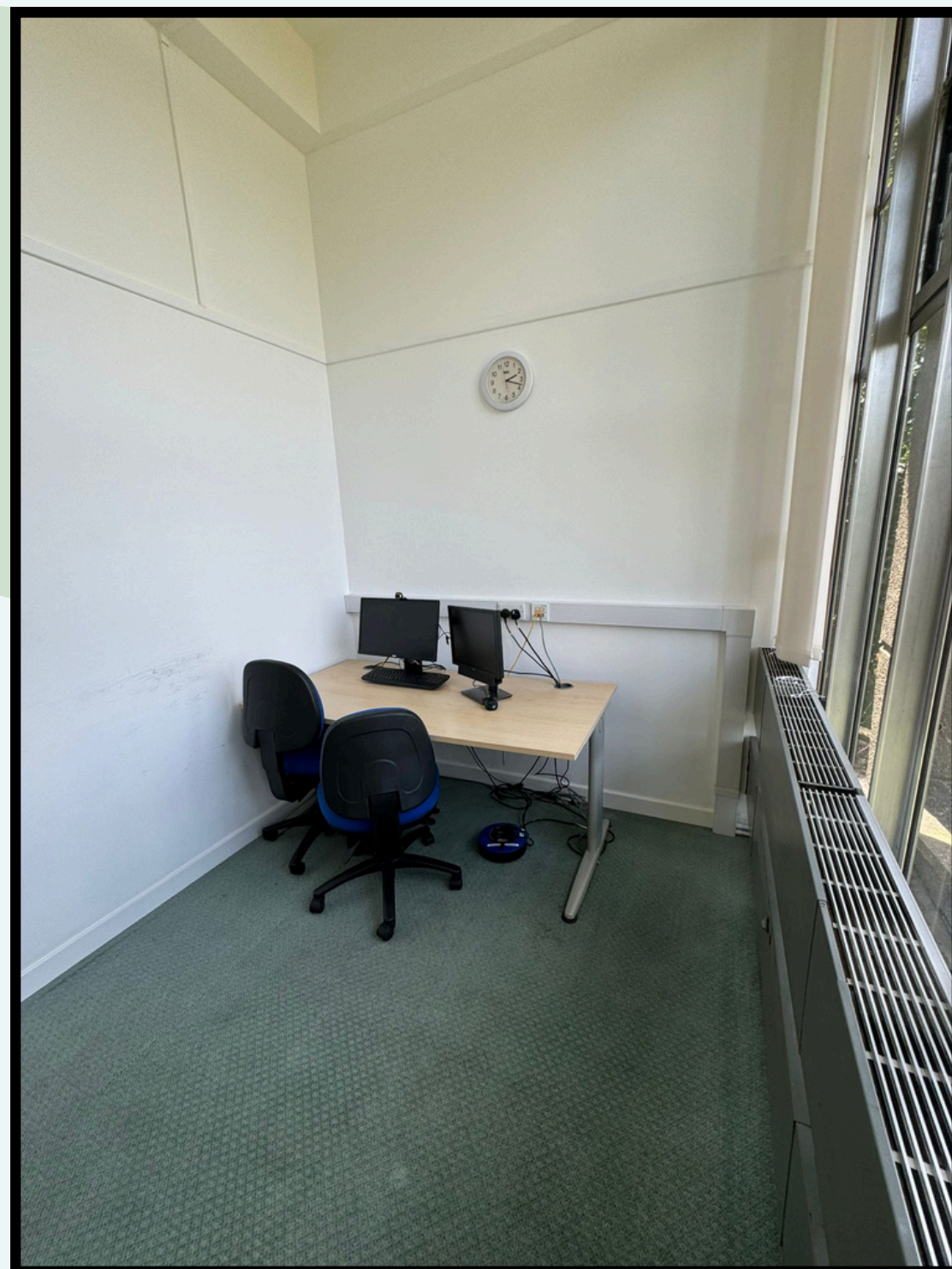
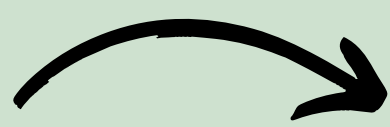


Zone 3 has books and resources for a range of subjects, and two study rooms.

Each shelf has posters on the end, these will help you find the section you are looking for.

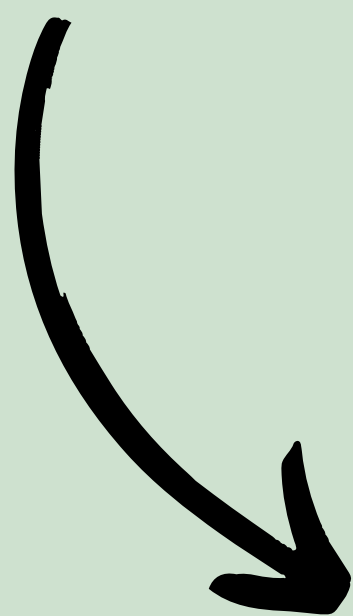
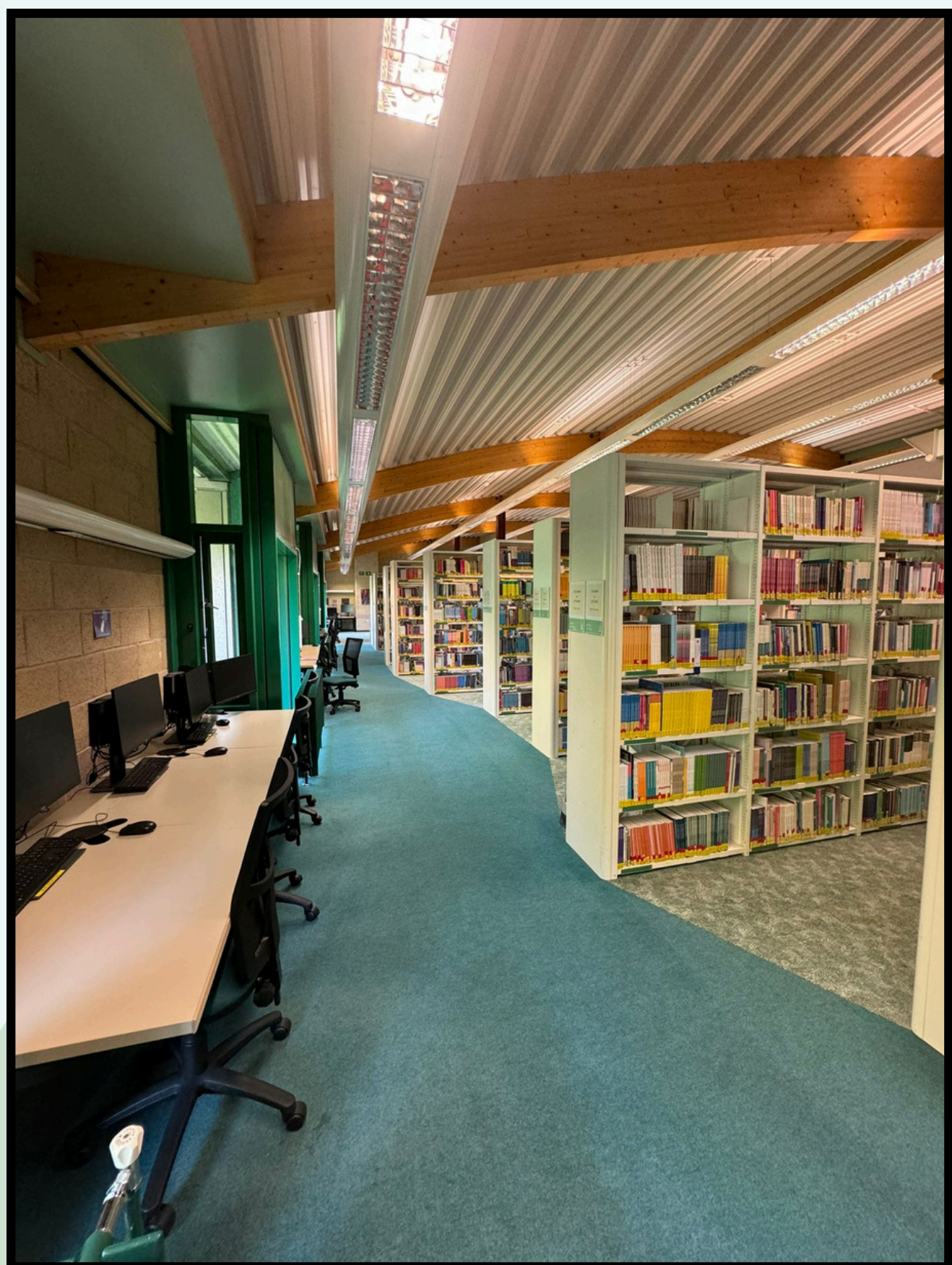


This is an example of what the study rooms look like.



Turn right at the big window at the end of zone 3 and go through the corridor - you will then reach **Zone 4**, another quiet zone.

There are more books and study rooms available in this zone.



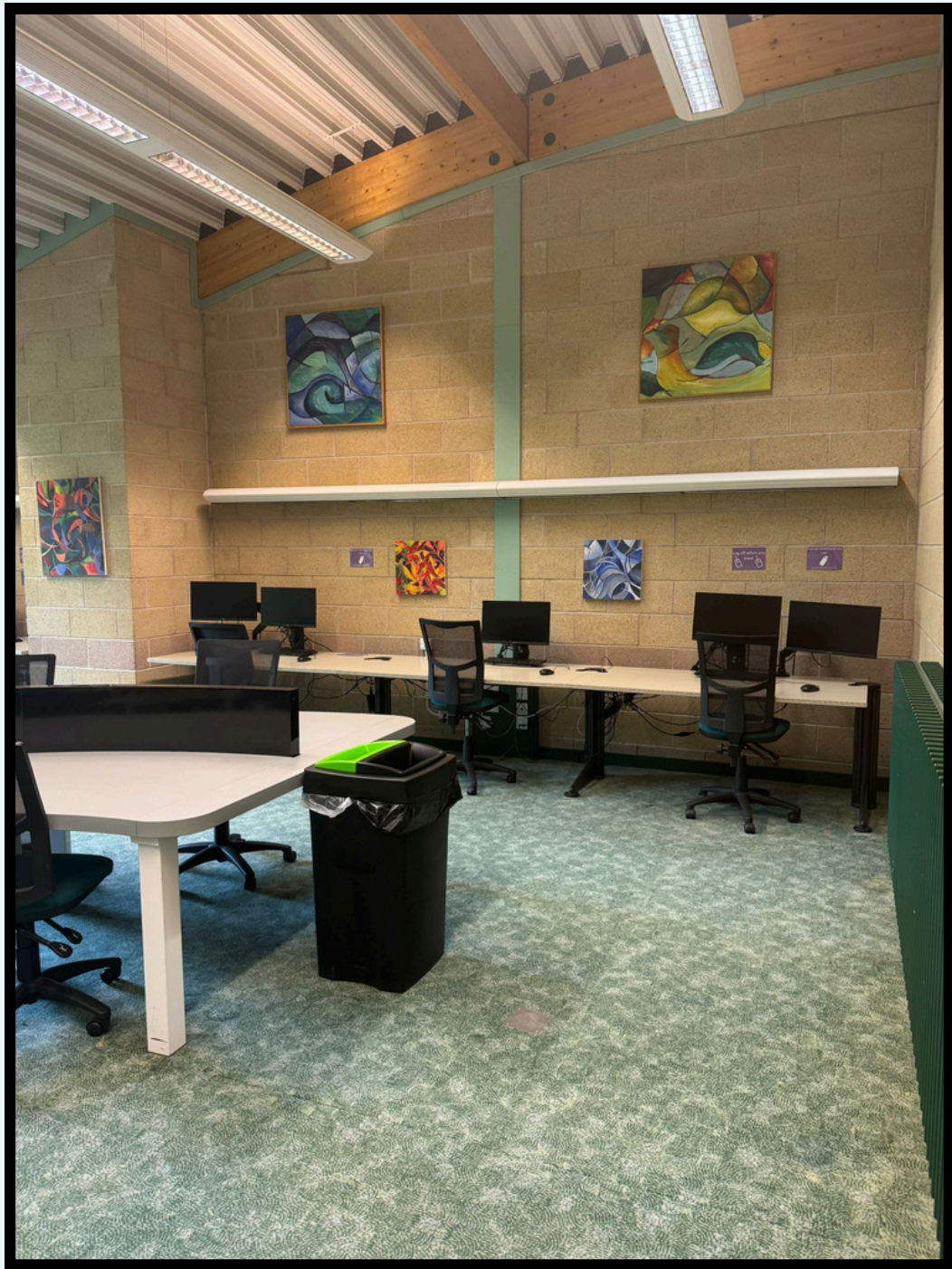
There is an accessible study room in zone 4 - the perfect place to study!



This is an example of what a larger study room looks like.



There are also computers for you to use at the back of Zone 4.



That's the library!

During staffed hours the library has plenty of friendly faces that are able to help you with any issues you may have. Just visit the Step Desk (near the entrance) to talk to us.